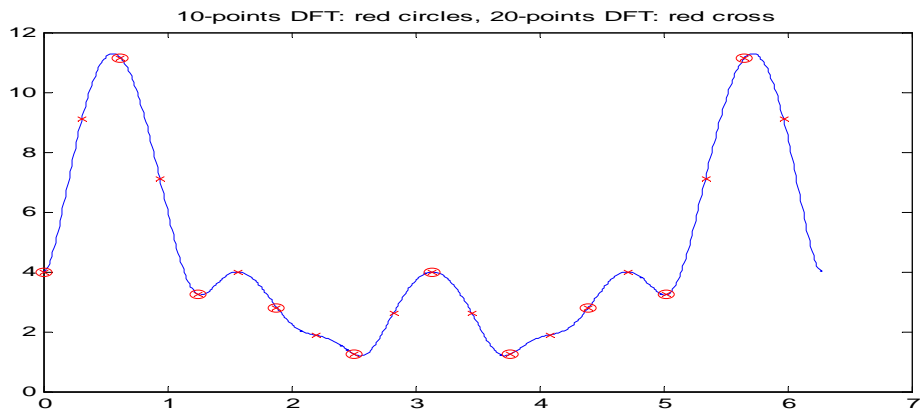


Svar till övning 4.

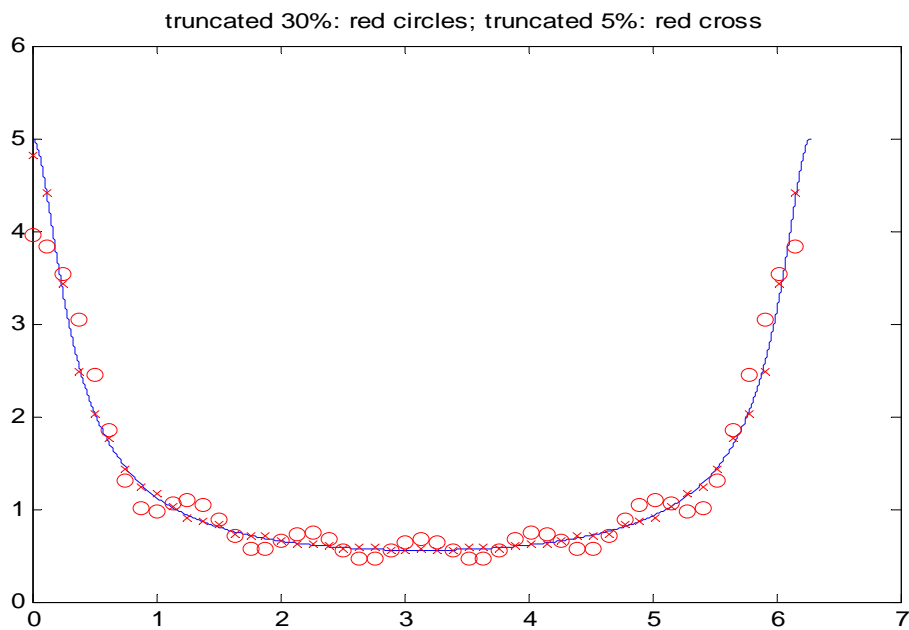
Uppgift 1:



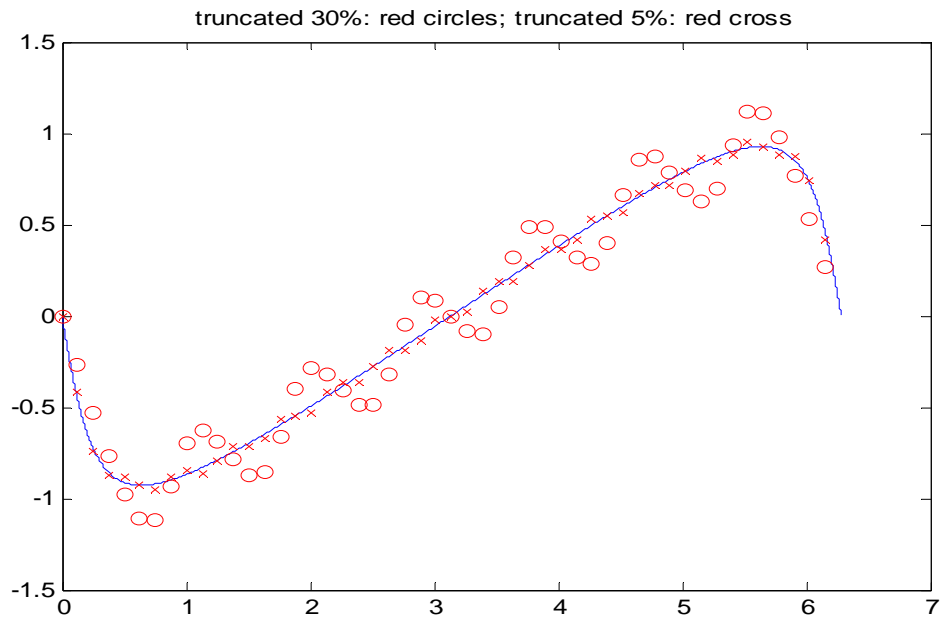
Uppgift 2:

$$X(\Omega) = \frac{1}{1 - 0.8e^{-j\Omega}}$$

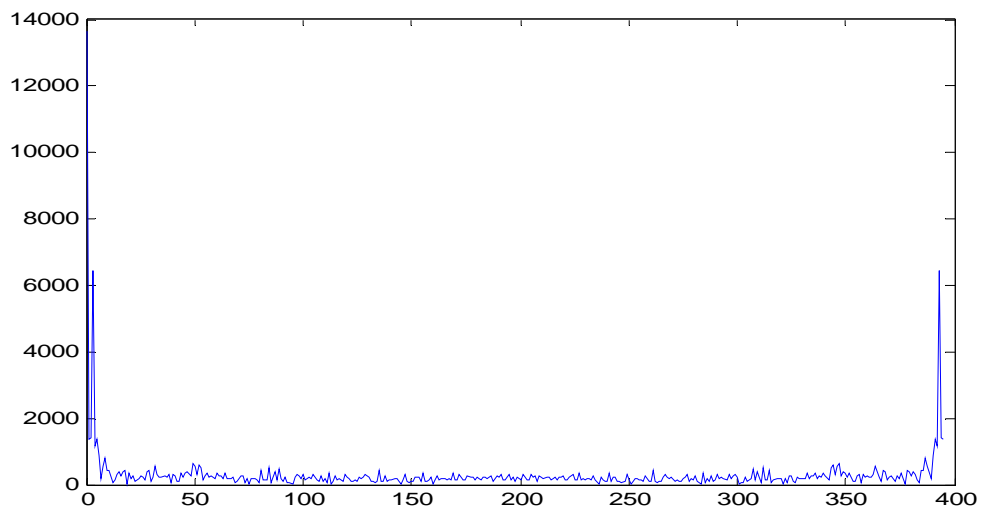
Amplitud-spektrat:



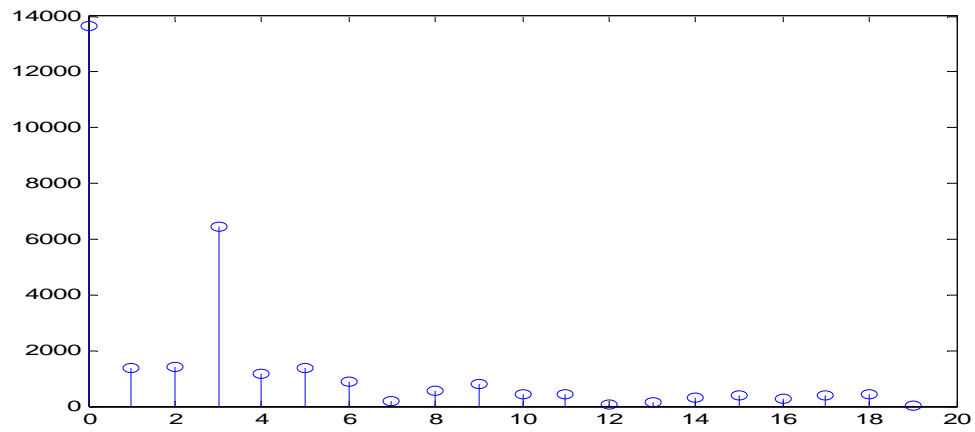
Fas-spektrat:



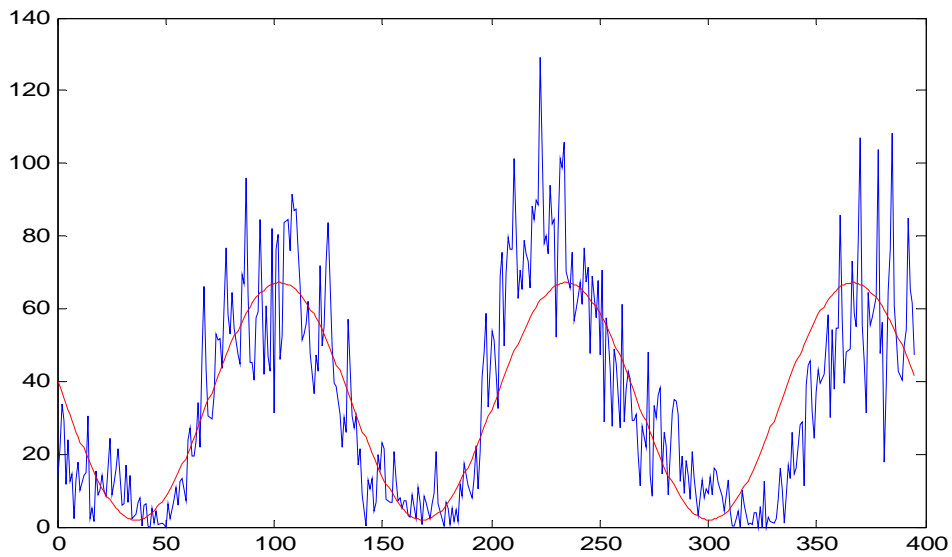
Uppgift 3:
Amplitud-spektrat:



Amplitud-spektrat; kring dominant frekvens

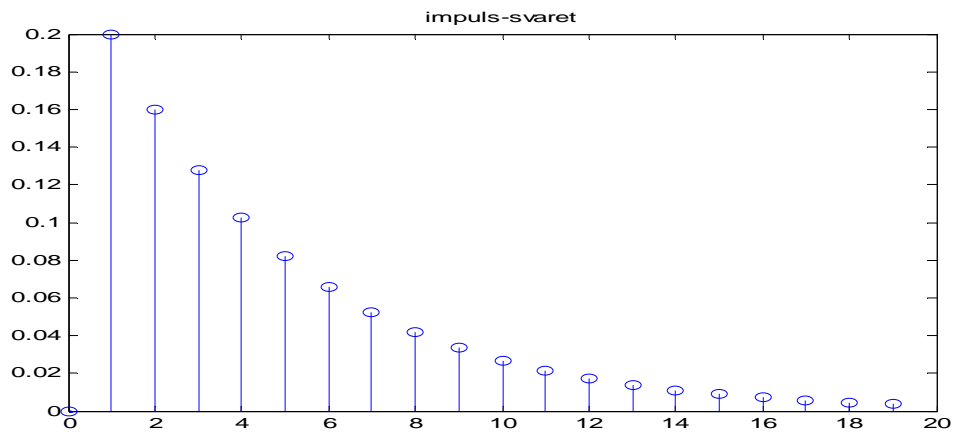


Originalsignal (blå) och approximation (röd)

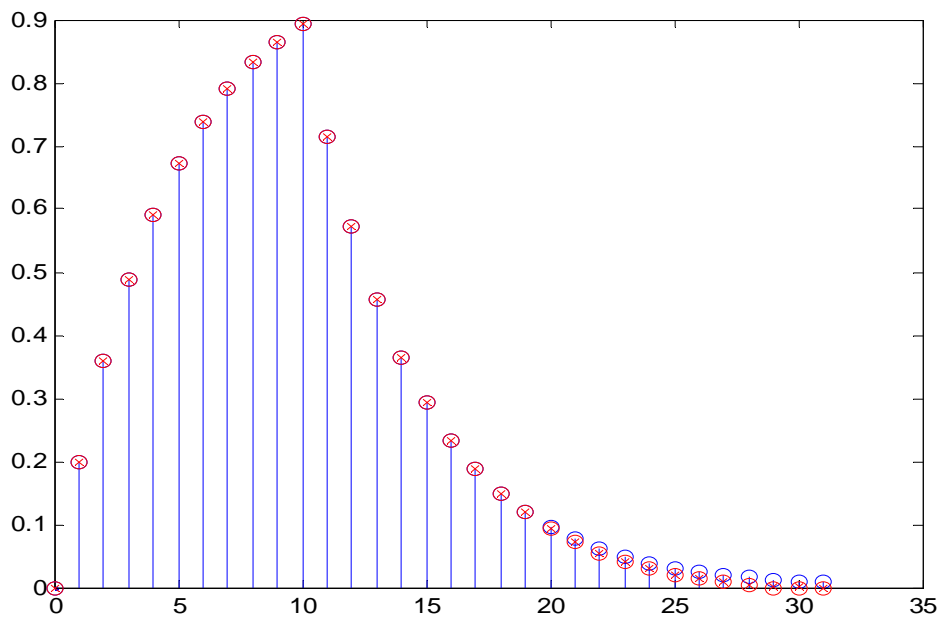


Uppgift 4:

a)



b), c) och d)



e)

