

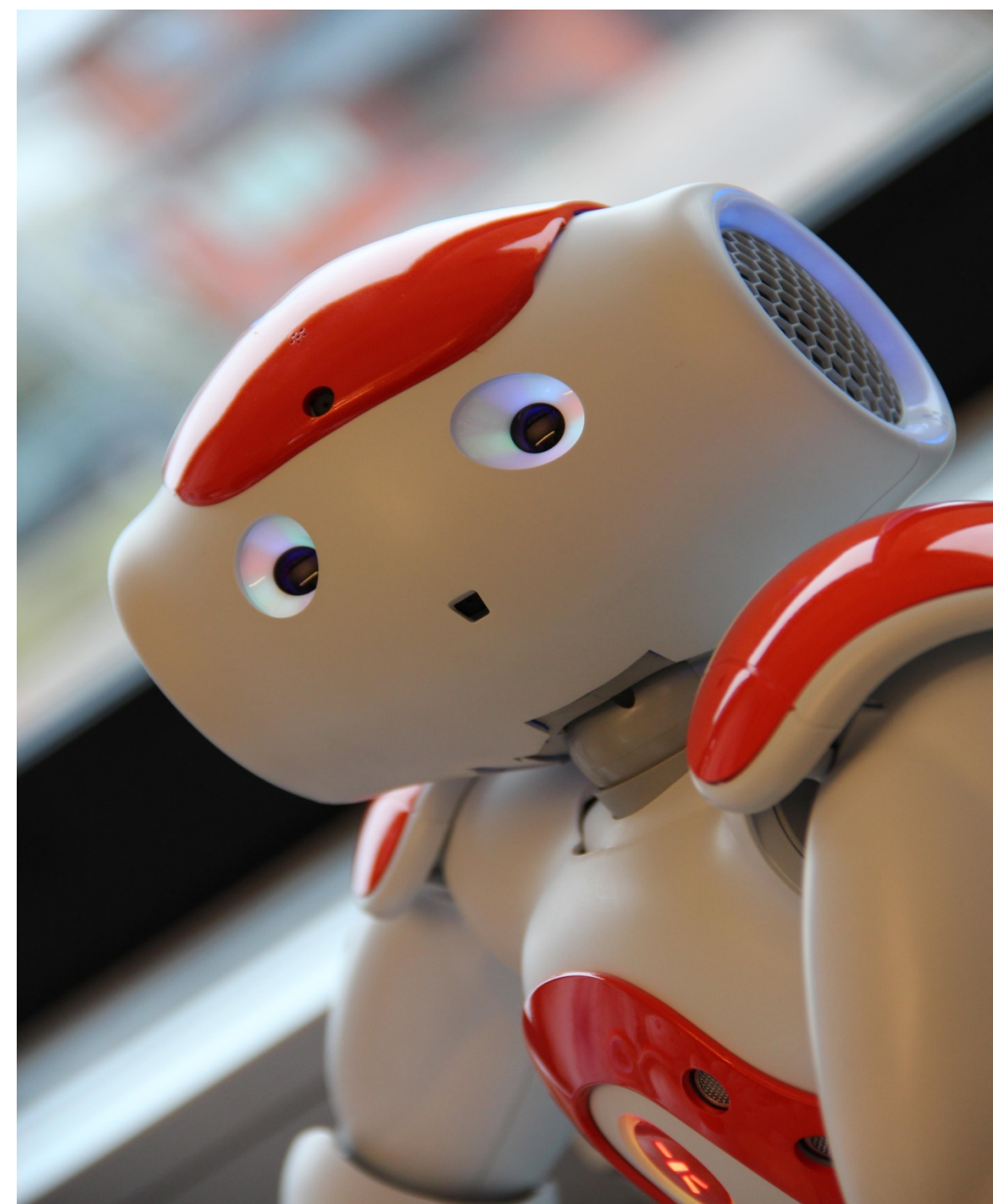
# Cooperative Embedded Systems

## A Research Theme within Research for Innovation

–the overarching strategic research programme at Halmstad University, with support from The Knowledge Foundation

### Background and Motivation

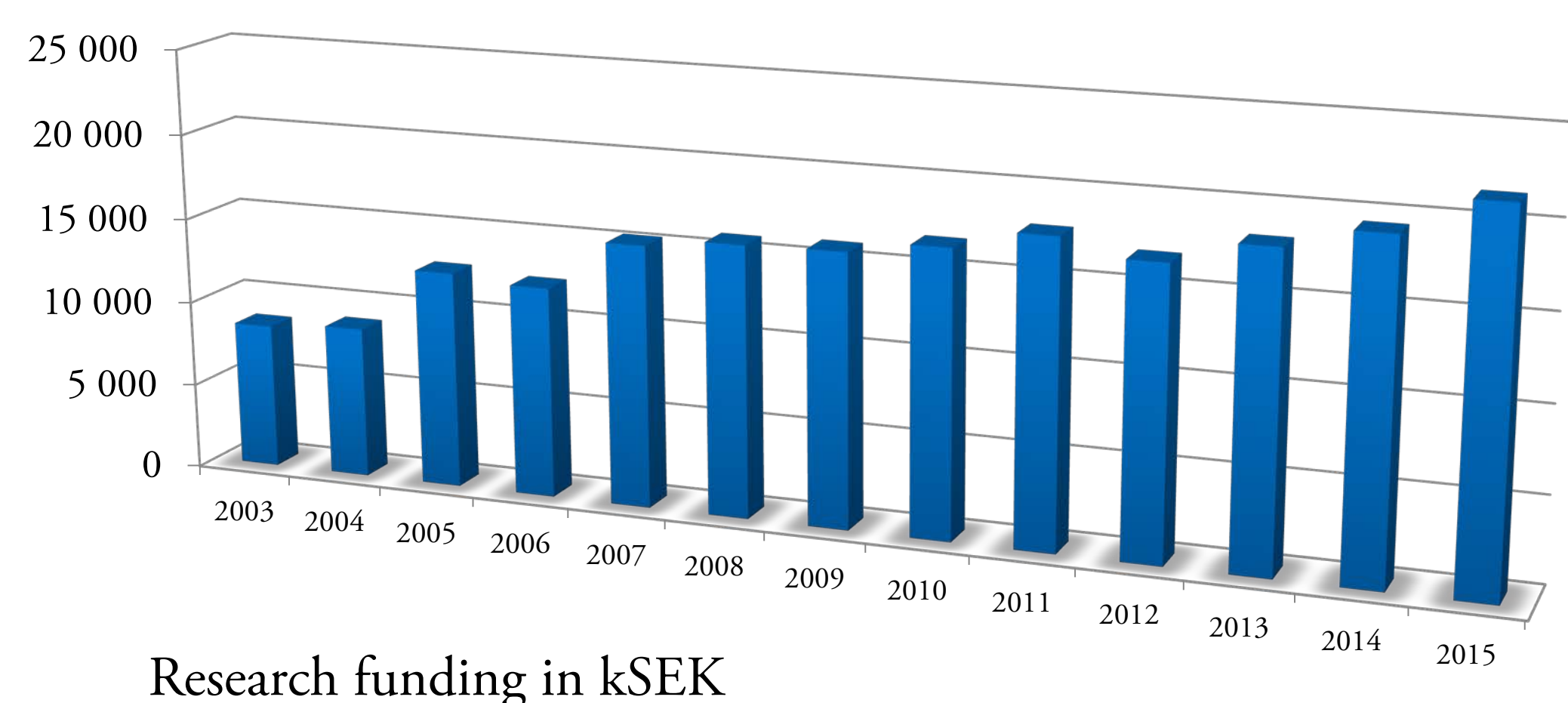
- **Center for Research on Embedded Systems (CERES):** established 12 years ago (in 2003)
- **Vision:** to create a world-renowned center of excellence on cooperative embedded systems
- **Status:** an international research center with ca. 40 researchers, led by a team of renowned researchers, covering the different subfields of cooperative embedded systems research



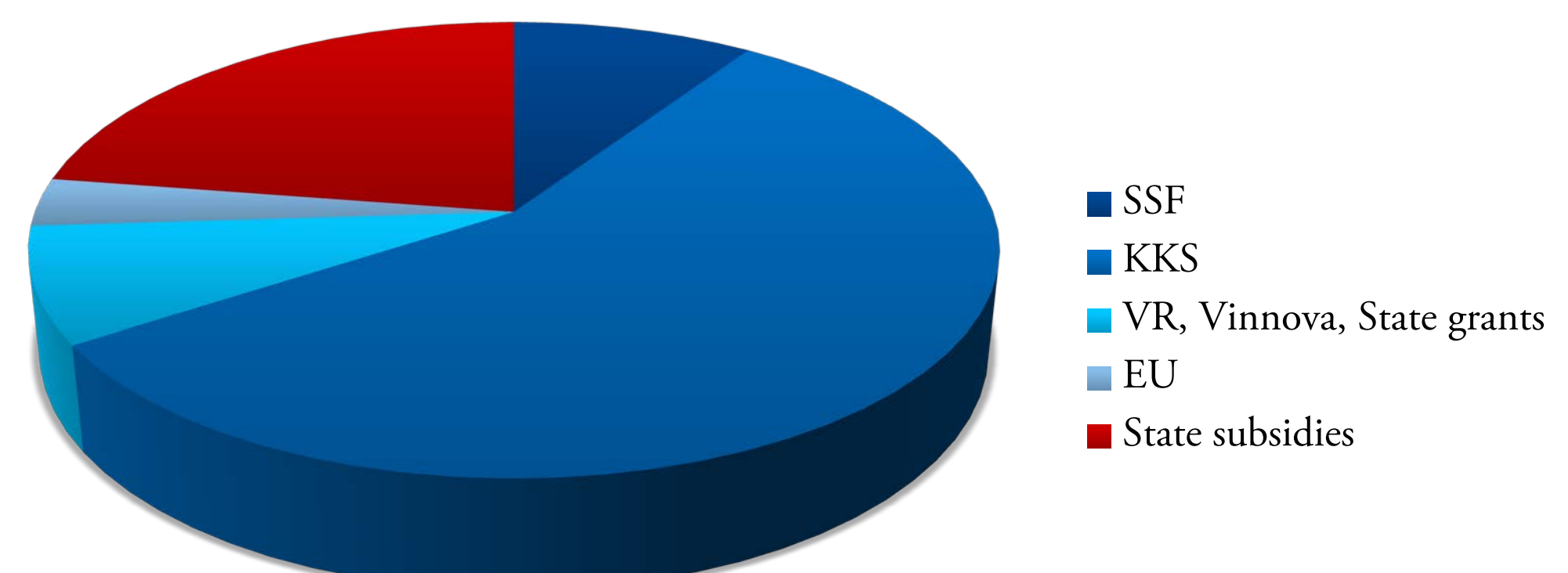
### Strategic Activities

- **Excellence in Research:**
  - Carrying out research at the highest international level,
  - Publishing in the best academic outlets, emphasis on publishing in journals with high quality standards, and
  - Covering a broad spectrum from fundamental research to applied innovation.
- **Coproduction with Industry:**
  - Being inspired by societal and industrial challenges, and
  - Maintaining and extending a network of partner companies.
- **Competence Development:**
  - Providing excellent possibilities of career development for our colleagues,
  - Developing new expertise through both inbound and outbound guest researchers,
  - Extending our pool of expertise through strategic recruitments, and
  - Developing leadership skills at CERES by organizing and participating in management and leadership workshops.
- **Research-Based Education:**
  - Disseminating knowledge through various educational programs, and
  - Innovating our educational programs constantly and developing programs to meet societal needs in our areas of expertise.

### Growth Trend



### Key Funding Sources



### Contact Information

Mohammad Reza Mousavi  
 Professor and Theme Leader  
 M.R.Mousavi@HH.SE

<http://CERES.HH.SE/>

