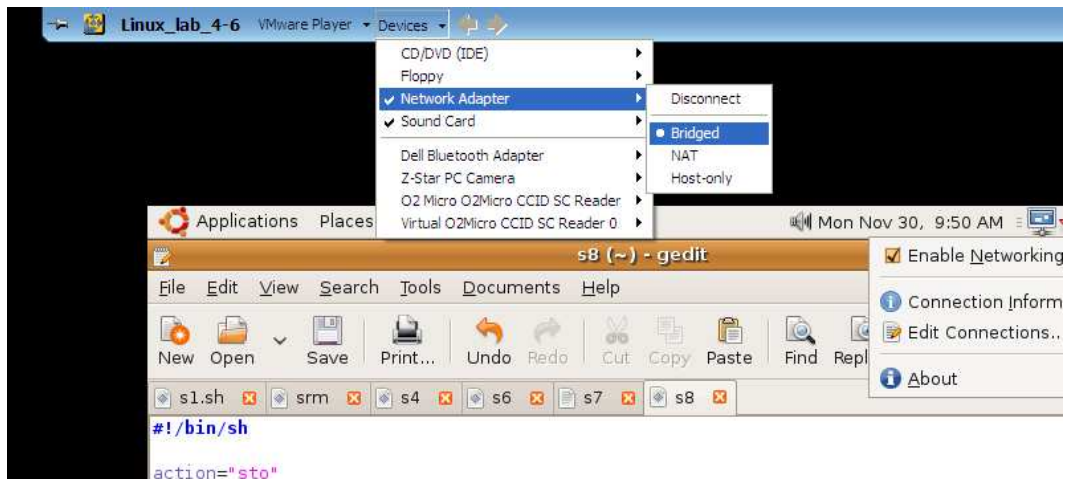


How-To configure the network

1. Go to the course page and download the files interfaces and resolv.conf.
2. Edit the file interfaces and replace the X with your virtual IP (see the topmost or right sticker on the physical computer box).
3. Make sure that the network device in the VMWare top bar is set to mode "Bridged". This configuration requires that you take care of the IP-allocation but on the other hand the system will be visible from the outside (external network).



4. Open a terminal and go to the folder where you put the files (most likely Desktop).
5. Copy the files using:
`sudo cp interfaces /etc/network/`
`sudo cp resolv.conf /etc`
6. Restart the network using:
`sudo /etc/init.d/networking restart`
7. Try to ping google.com