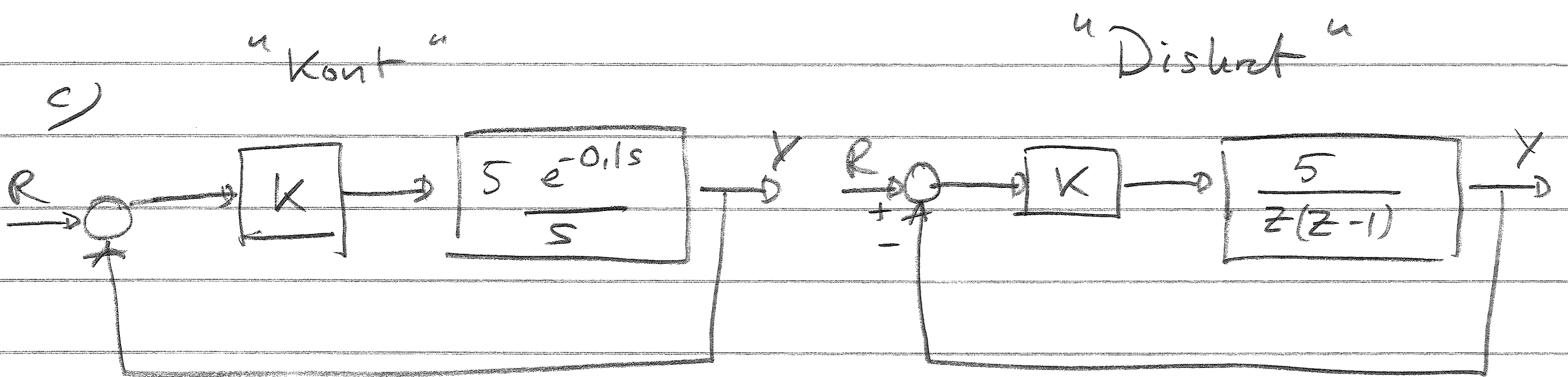
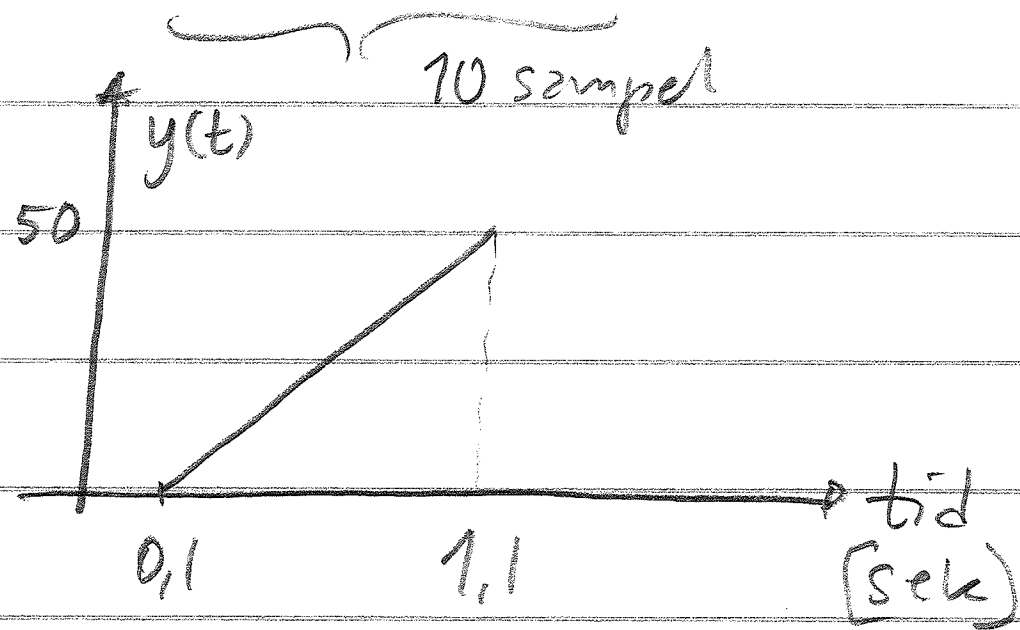
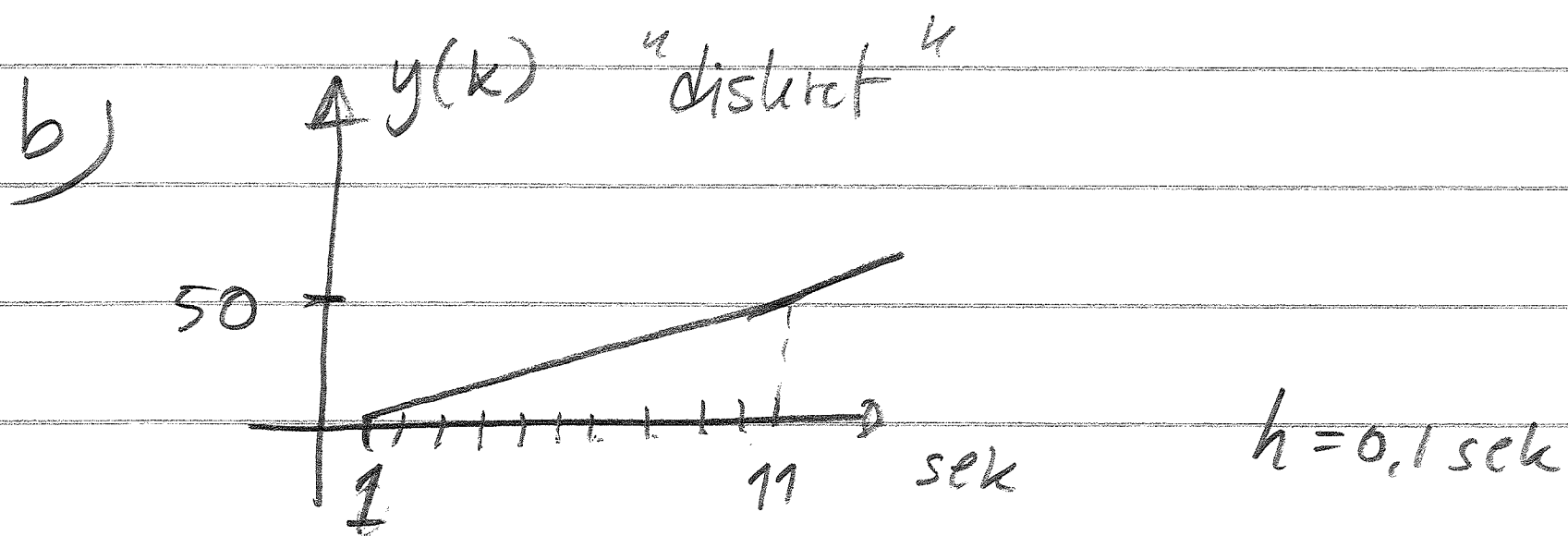


8.

a) $\begin{cases} h = 0,1 \\ K = 50 \end{cases}$



om $K \geq 0,314$

blir det instabilt

karakt. ekv.

$$5K + z(z-1) = 0$$

$$|z| < 1$$

$$\text{abs} \left(\frac{1}{2} \pm \sqrt{\frac{1}{4} - 5K} \right)$$

vid $K = 0,2$

blir det instabilt.