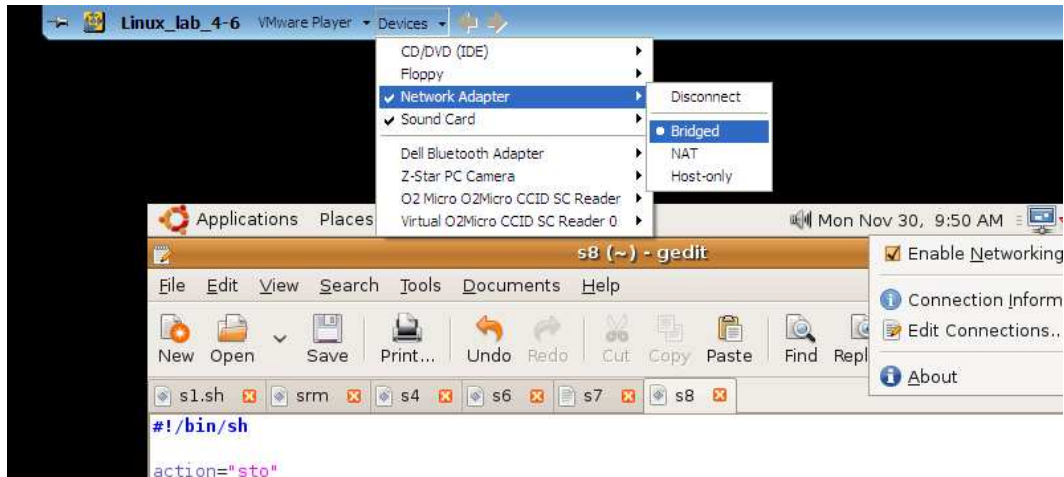


How-To configure the network

1. Make sure that the network device in the VMWare top bar is set to mode "Bridged". This configuration requires that you take care of the IP-allocation but on the other hand the system will be visible from the outside (external network).



2. Right click on the icon with the two screens in the top menu bar.
3. Select "Edit connections".
4. Click on "ethX" and then "Edit". We will now edit the configuration of the wired network interface of the virtual computer.
5. Switch to the tab IPv4. Make the following configurations:
 - a. Select method: Manual.
 - b. IP Address: 192.168.203.XX
The number XX is found on the right sticker on the computer.
 - c. Subnet mask: 255.255.255.128
 - d. Gateway: 192.168.203.1
 - e. DNS: 194.47.0.30
 - f. Click "OK".
6. Start a terminal and try "ping google.com". If it doesn't work, ask for assistance.